

SEGA  
GENESIS  
16-BIT CARTRIDGE

# RBI '93 BASEBALL

INSTRUCTION MANUAL



© MLBPA



# TENGEN

## **WARNING:**

### **READ BEFORE USING YOUR SEGA VIDEO GAME SYSTEM**

A very small percentage of individuals may experience epileptic seizures when exposed to certain light patterns or flashing lights. Exposure to certain patterns or backgrounds on a television screen or while playing video games may induce an epileptic seizure in these individuals. Certain conditions may induce undetected epileptic symptoms even in persons who have no history of prior seizures or epilepsy. If you, or anyone in your family, has an epileptic condition, consult your physician prior to playing. If you experience any of the following symptoms while playing a video game: dizziness, altered vision, eye or muscle twitches, loss of awareness, disorientation, any involuntary movement, or convulsions, IMMEDIATELY discontinue use and consult your physician before resuming play.

### **WARNING TO OWNERS OF PROJECTION TELEVISIONS**

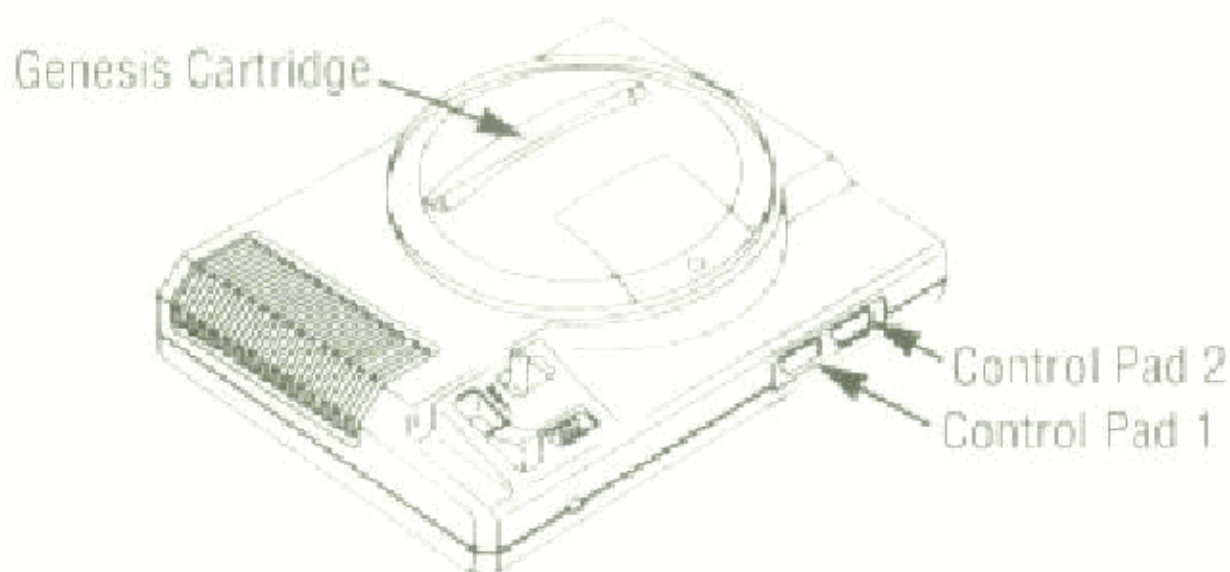
Still pictures or images may cause permanent picture-tube damage or mark the phosphor of the CRT. Avoid repeated or extended use of video games on Large-screen projection televisions.



This official seal is your assurance that this product meets the highest quality standards of SEGA™. Buy games and accessories with this seal to be sure that they are compatible with the SEGA™ GENESIS™ SYSTEM.

# AtariGuide

# GETTING STARTED



1. A Genesis Controller should be plugged into the "Control 1" port on your Sega Genesis.
2. Make sure the power switch is OFF. Make sure there is no game cartridge in your Sega Genesis System and follow all Sega Genesis System directions to activate your Sega Genesis System.
3. To begin play, press the Start Button when the Title screen appears.

## HANDLING YOUR SEGA CARTRIDGE

- The Sega Genesis Cartridge is intended for use exclusively with the Sega™ Genesis™ System.
- Handle it with care. Do not bend it, crush it or submerge it in liquids.
- Do not leave it in direct sunlight or near a radiator or other source of heat.
- Be sure to take an occasional recess during extended play, to rest yourself and the Sega Cartridge.

# INTRODUCTION

Take on the pros!

You've got nearly 700 real Major League Baseball Players from all 28 Big League rosters at your control—including the new Colorado and Florida expansion teams. And you can face them all on their turf—from Chicago's friendly confines to the Big Green Monster in Boston.

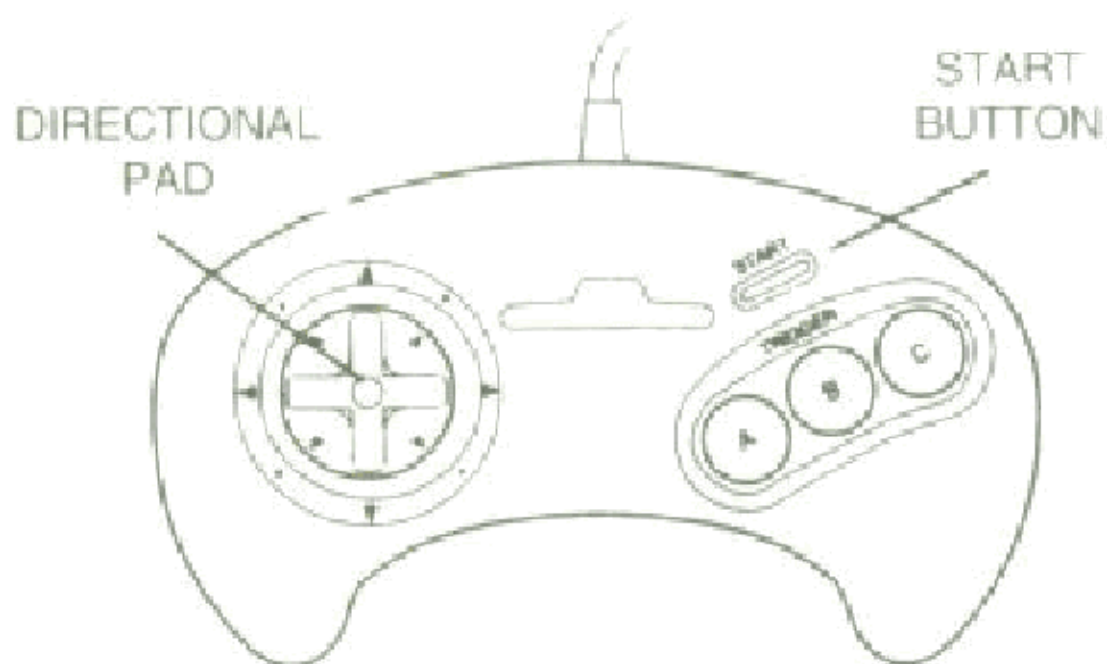
Step up to the plate as Kirby Puckett and sink a pearl in the K.C. waterworks or see what it feels like to stare down the barrel of a loaded cannon when Nolan Ryan lights up the radar at 100 MPH.

You can even create your own Dream Team or make trades—how would Canseco look in Florida teal? You can replay classic baseball moments with the Game Breakers module and rosters of every division champ since 1984 or swing for the fences as your favorite big bat in Homerun Derby. You can even warm up your gloves in Defense Practice mode.

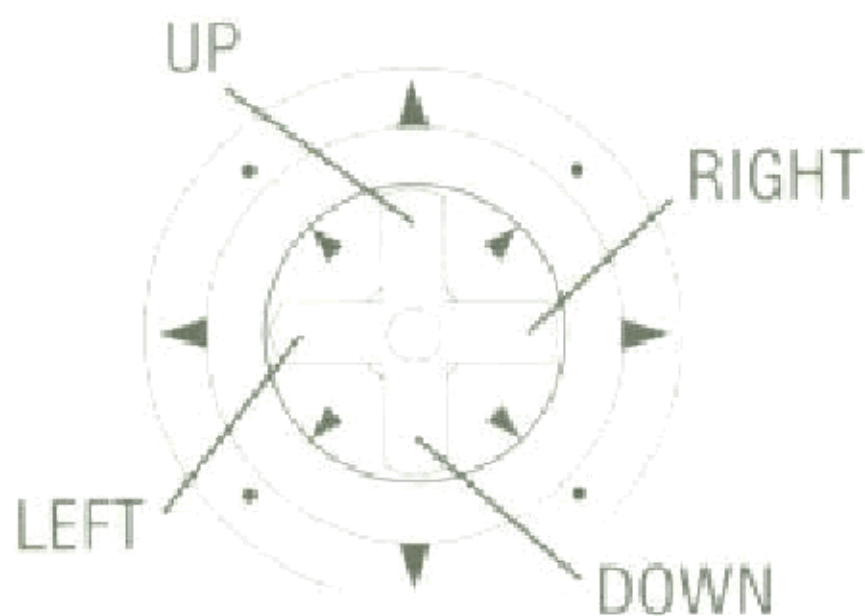
With R.B.I. Baseball '93, it's a whole new ball game . . .



# CONTROL PAD



This manual refers to the following directions:





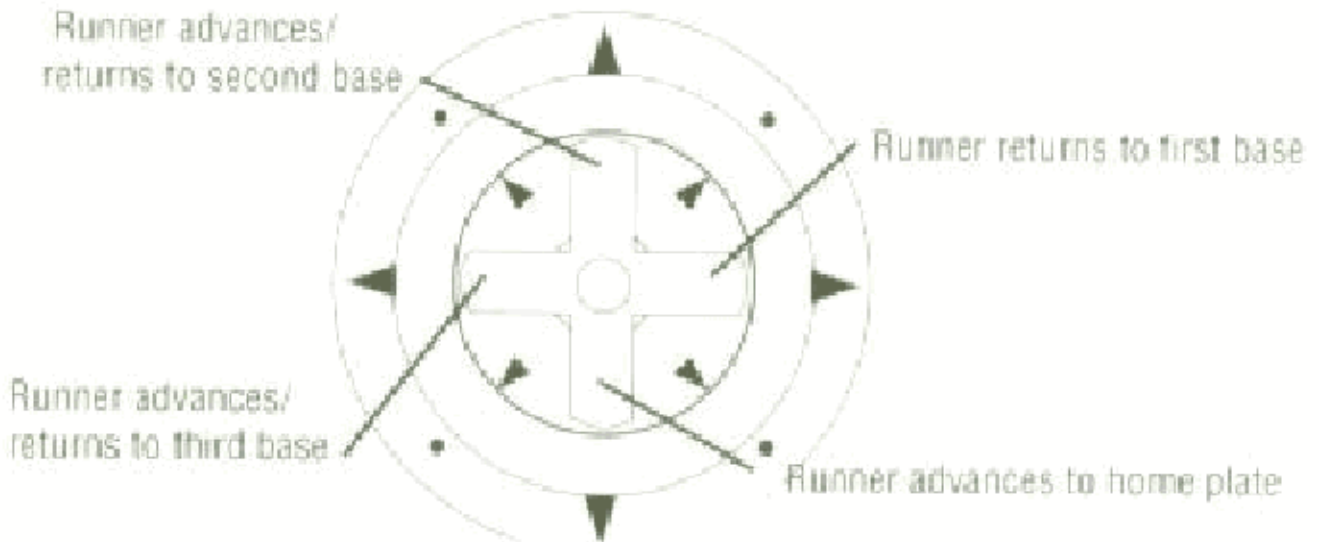
## AT THE PLATE

**TO ADJUST BATTER STANCE:** Move the Directional Pad in desired direction.

**TO SWING BAT:** Press and hold the A Button for a complete swing.

**TO BUNT:** Press the C Button. Press the C Button again to return the bat to the ready position.

## BASE RUNNING



**TO ADVANCE TO NEXT BASE:** Choose your destination with the Directional Pad and press the B Button.

**TO RETURN TO PREVIOUS BASE:** Choose your destination with the Directional Pad and press the C Button.

**TO TAKE AN EXTRA LEAD:** Your base runner automatically takes a small lead. To take an extra lead, hold the Directional Pad in the direction of the base you wish to move toward and tap the B Button.

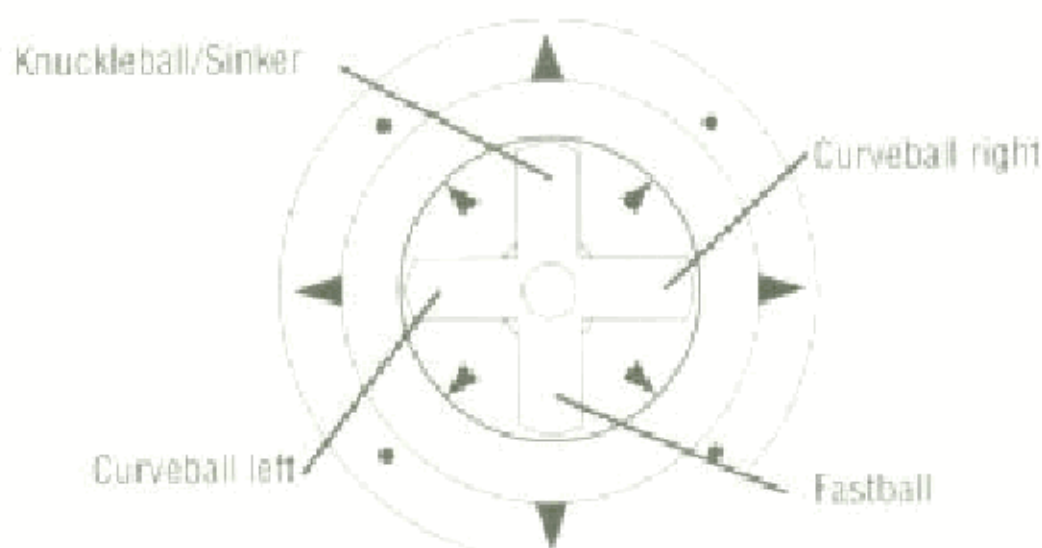
**TO CANCEL A LEAD OFF:** Press the Directional Pad toward the base you wish to return to and press the B Button.

**TO STEAL A BASE:** As the pitcher gets set, press and hold the Directional Pad in the direction of the base you wish to run to, then press the B Button. When the ball is pitched, your runner will then take off to the next base.



# GAME CONTROL

## ON THE MOUND



**TO POSITION PITCHER ON MOUND:** Press the Directional Pad LEFT or RIGHT to desired location.

**TO THROW A NORMAL SPEED PITCH:** Do not press Directional Pad, just Press the A Button.

**TO THROW A KNUCKLEBALL OR SLOW PITCH:** Press and hold the Directional Pad UP. Then press the A Button.

**TO THROW A FASTBALL:** Press the Directional Pad DOWN. Then press the A Button.

**TO CONTROL THE BALL:** Move the Directional Pad UP, DOWN, LEFT or RIGHT after pitch is thrown.

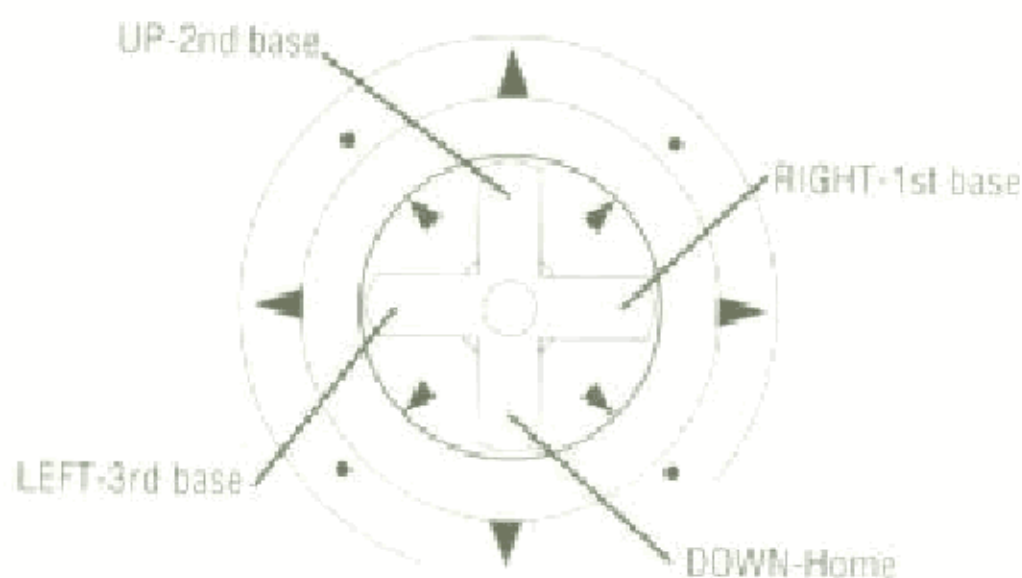
**TO ATTEMPT A PICK OFF:** Using the Directional Pad, select the base you wish to make the play to and press the B Button.

**TO THROW A SPITBALL:** Hold down the C Button and press the A Button to pitch. A spitball looks like a normal pitch, but drops just before it crosses the plate. The spitball is considered an illegal pitch and should only be used in important situations. The first time your pitcher is caught, he will receive a warning, the second time he will be ejected.

**TO THROW A PITCH-OUT:** Move the pitcher to the side of the mound, continue to hold the Directional Pad in that position, hold down the C Button, then pitch the ball. A pitch out is as fast as a fastball, but only uses the stamina of a normal speed pitch.



## FIELDING THE BALL



**TO THROW TO FIRST BASE:** Press the A Button.

**TO THROW TO ANY BASE:** Press the Directional Pad in the direction of the base you wish to throw the ball, and press the A Button.

**TO RIFLE BALL TO ANY BASE:** Press the Directional Pad in the direction of the base you wish to throw and press the A Button simultaneously.

**TO RUN TO A BASE:** Press the Directional Pad in the direction of the base you wish to run and Press the B Button. When no base is selected, the fielder will automatically run to first base.

**TO DIVE:** When the ball is hit, press the Directional Pad in the direction of the ball and press the B Button.

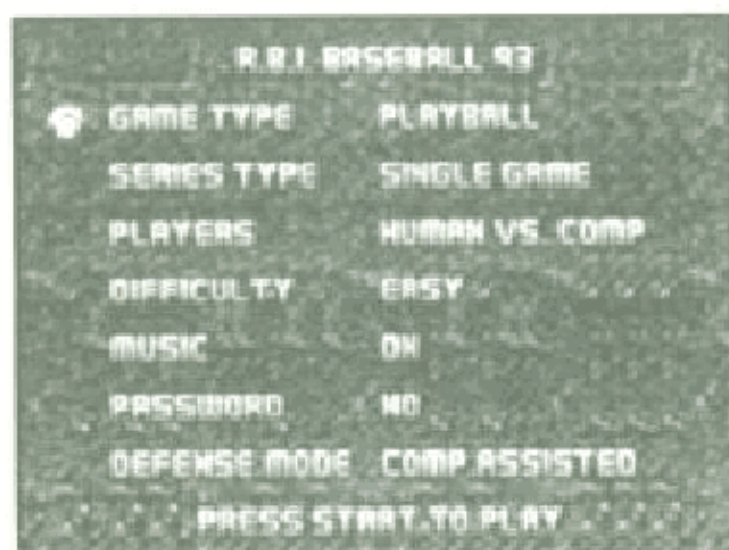
**TO JUMP:** Press the C Button.

**NOTE:** The pitcher cannot jump or dive





# MAIN GAME MENU



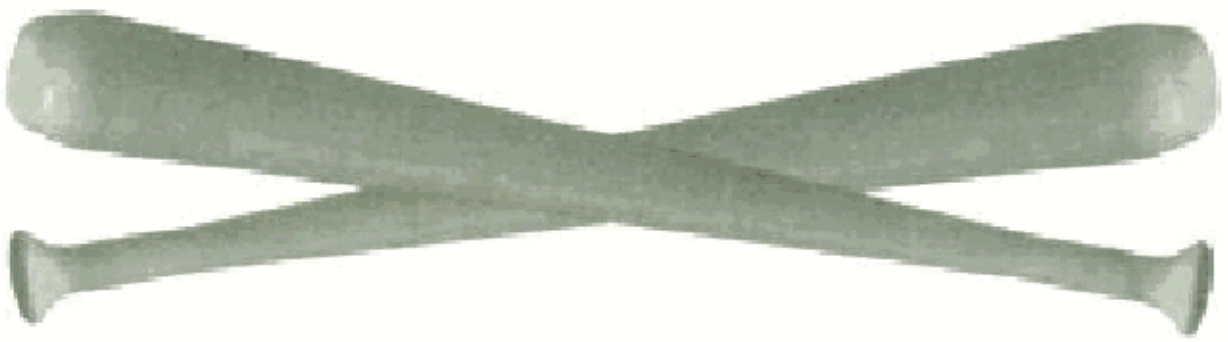
From the Title screen, press the Start Button to reach the Main Game Menu. To make a selection in the Main Game Menu, move the Directional Pad Up or Down to position the ball next to the desired selection and press either the A Button to cycle forward through the various option choices under that selection, or the B Button to cycle backward. Once you've made all your game selections and play adjustments, press the START Button to begin play.

At the Main Game Menu you can select from the following options:

## Game Type

The following is a list of the various game types in RBI '93:

- **Play Ball** - Select from your favorite teams and take part in either a single game or game series against a particular team. You can also choose to test your record against all the teams in the League.
- **Home Run Derby** - Swing for the fences as your favorite big bat in a 20-pitch home run contest.
- **Game Breakers**  
Take part in any of 17 white-knuckled game breaking situations.



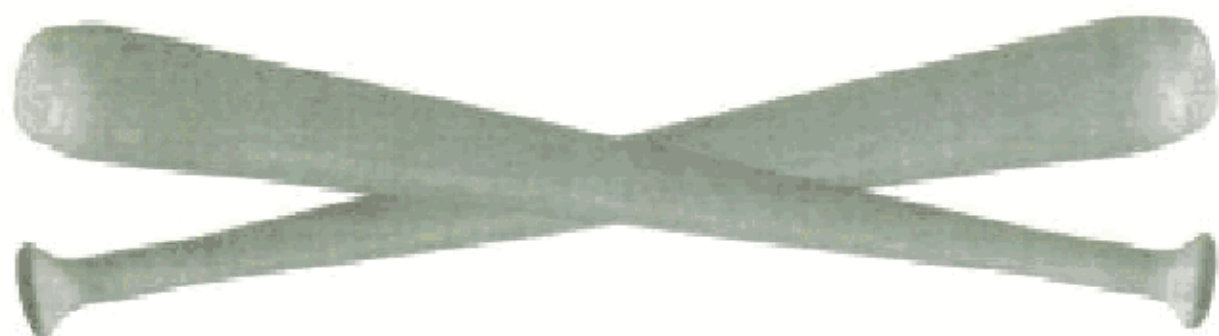
- **Create Teams**  
This option allows you to create your own Dream Team using any of the players in the cartridge—including Division winners since 1984.
- **Sound Test**  
This option lets you sample the 56-track library of game music and sound effects. To sample, use the Directional Pad to cycle through the tracks and press the A Button to hear that selection. To advance to the next track, press the B Button to stop the sound and repeat above procedure. Press the START Button to return to the Main Game Menu.
- **Stadium Tour**  
Use the Directional Pad to view each team's home park—from home plate to the bleachers.
- **View Teams**  
View all the team rosters in the game by moving the Directional Pad LEFT or RIGHT. Press the A Button to see the pitchers. (See page 17 for abbreviation descriptions)
- **Defense Practice** - Take to the field and hone your defensive skills by shagging flies, grounders and line-drives.

## Series Type

Choose to play a single game only, take part in a Best of Seven series against an individual team, take on an entire Division game-by-game, or go up against every team in the League.

After completing a 2-player game in Best of Seven series, or a 1-player game in either Division or League modes, you will be given a password. The password allows you to continue play in that series at a later date. (For more information on Passwords see page 8 )





## Players

The following is a list of the various play modes in the game:

- **Human vs. Comp** - Take on the computer as the visiting team in a 1-player game.
- **Comp vs. Human** - Take on the computer as the home team in a 1-player game.
- **Human vs. Human** - Take on a buddy in a 2-player game.
- **Comp vs. Comp** - Pick the teams and sit back and watch the computer play.

## Difficulty

The following is a list of the various difficulty settings in the game:

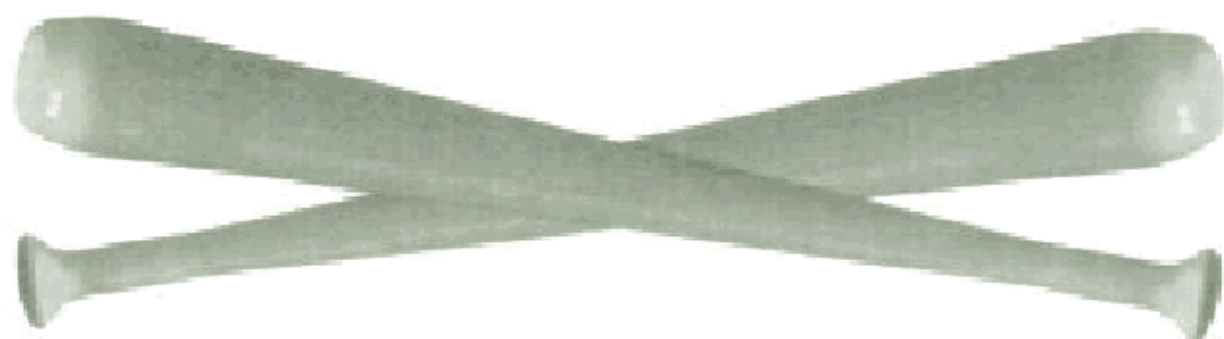
- **Easy** - after the ball is hit, an "X" will appear in the field to show where the ball is going to land. Computer defense speed: slow. Computer batter is not selective when choosing to swing at a pitch.
- **Medium** - no "X" in field. Computer defense speed: normal. Computer batter is more selective at the plate.
- **Hard** - no "X" in field. Computer defense speed: fast. Computer batter is very selective at the plate.

## Music

Select whether you'd like to play with the background music on, or off.

## Password

Use this option to play with a password. To enter your password, at the password screen, move the Directional Pad LEFT or RIGHT to position the ball under the desired letter space, then press the Directional Pad UP or DOWN to cycle through the password symbols. Once you've made your symbol selection, repeat this procedure until you've entered your entire password, then press the START BUTTON.



## Defense Mode

Use the following settings to adjust your defense control:

- **Computer assisted** - the computer controls the fielding of the defensive player closest to the ball. As soon as you see your player appear on screen you can override the computer assist if you wish.
- **Manual** - You control all your defensive players.
- **Automatic** - The computer controls the fielding of all your defensive players. To regain control of a player, hold down the A Button as you move him.

NOTE: In all modes you must throw the ball for yourself.



# TEAM SELECTION

You can select your teams from any of the 28 '92 rosters, the All Star lineups from '89 to '92, or the Division Champs from '84 to '92. Use the Directional Pad to move the cursor next to the team lineup you wish to play with, then press the A Button to enter that selection. Repeat this procedure to select the opposing team.

## SELECTING YOUR STARTING PITCHER

To select a pitcher, position the cursor next to your desired selection and press the A Button to enter your pitching choice.

NOTE: You can use up to 5 pitchers per game: 1 starter and 4 relievers, or 2 starters and 3 relievers. The first 4 pitchers on your roster are the starters, and any starting pitcher can only appear in every other game in a series.

## SELECTING YOUR STARTING LINEUP

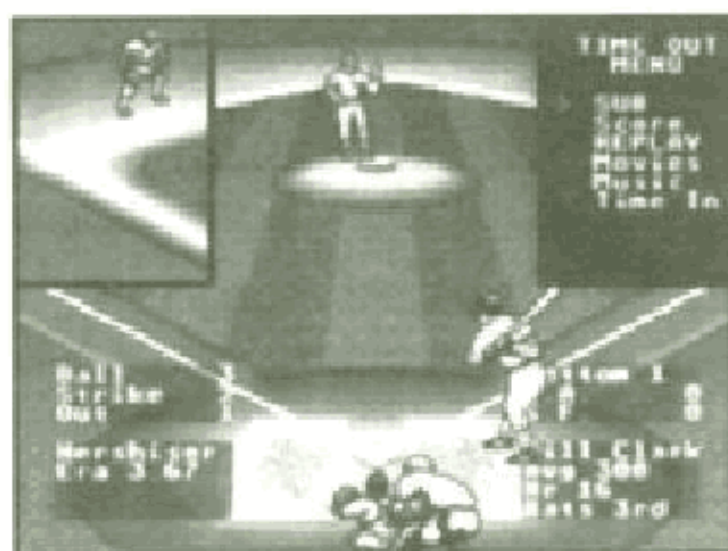
You can adjust your lineup before each game. Begin by moving the cursor to the player you wish to reposition, then press the B Button to shade that player. Next, move the cursor to the position you wish to put the shaded player, and press the B Button again. That player will then automatically switch positions with the player currently occupying that roster spot. Repeat this procedure until you've completed your new order.

To view player stats, press the C Button. To accept the current lineup as it stands, or enter your new lineup, press the A Button.

To begin play, press the START Button at the Scoreboard Screen.

# CALLING TIME-OUT

## BATTER TIME-OUT OPTIONS



When your batter steps up to the plate press the **START** Button to pause the game and call up the Time-Out Menu. To make a selection on the Time-Out Screen, position the cursor next to any of the following options and press the **A** Button to enter your selection.

### **Substitutions (SUB):**

Use this selection to replace a batter or base runner. To make a substitution, move the cursor to the player you wish to bring in from the "Bench" and once his name appears under the word "with" (located at the top right of the screen), press the **A** Button and the substitution will be made.

### **Scoreboard (Score)**

Use this option to view the scoreboard.

**NOTE:** To forfeit a game, go to the scoreboard, hold the **C** Button, and press the **A** and **B** Buttons simultaneously

### **Switch Hit (Sw. Hit)**

Use this option to switch to a left, or right handed batter. This option only works with batters who are designated switch hitters.



### **Replay**

Use this option to review the last play.

### **Movies**

Let's you view all the animation scenes in the action windows.

### **Music**

Use this option to play with the background music on or off.

### **Time-in**

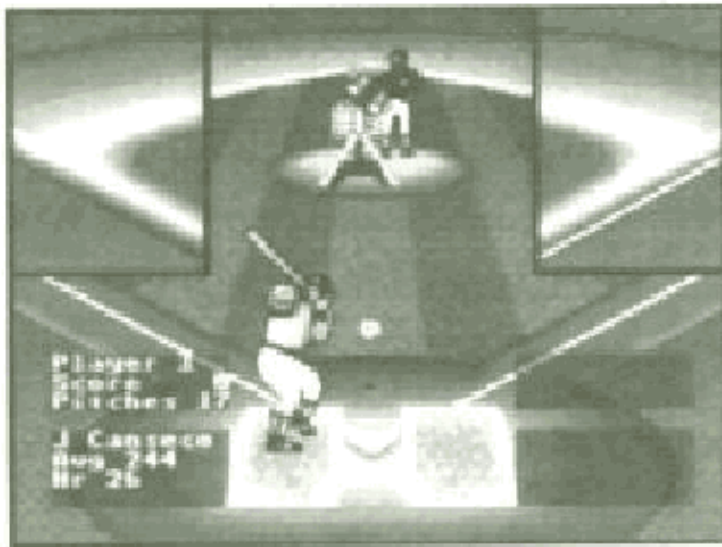
Select this option to continue gameplay or press START.

## **PITCHER TIME-OUT OPTIONS**

Before your pitcher goes into his wind-up, press the START Button to pause gameplay and bring up the Time-Out Options screen. This screen operates the same as in Batter Time-Out Options, but with one additional option:

- **New Pitcher (Relief)** - Move the cursor to the relief pitcher you wish to use and press the A Button to make the substitution and continue gameplay.

# HOMERUN DERBY



To begin the Derby, you must first select your team, and then your batter. To select your batter, use the Directional Pad to highlight a player and press the A Button to enter your selection and begin play. To adjust the speed of the pitch, press the Directional Pad LEFT or RIGHT. Score 3 home runs for a bronze trophy, 5 for a silver, 8 for a gold, and 11 or more for a special prize.

NOTE: In a 2-player Homerun Derby, both batters swing in player one's home park.



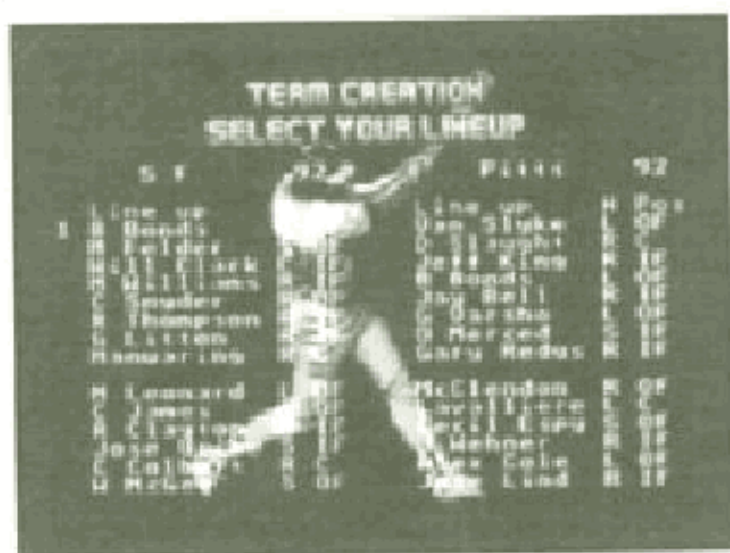
# GAME BREAKERS



To make a play selection in Game Breakers, choose your teams and you will be taken to the Game Breakers screen. Now use the Directional Pad to position the cursor beside one of the 17 Game Breakers situations and press the A Button to enter your selection. Note: Before you can begin play, you will also be asked to select a pitcher.

NOTE: In Game Breakers your password is updated only when you win a game.

# CREATE TEAMS/ MAKE TRADES



To create your own Dream Team, choose your teams and you will be taken to the "Select Your Pitchers" screen. The left side of the screen shows your current bullpen, the right displays the bullpen of the team you wish to select players from.

To cycle through the various team bullpens, press the Directional Pad LEFT or RIGHT. To make a pitcher selection, position the cursor next to the pitcher you want and press the A Button. Now reposition the cursor next to the player on your current roster you wish to replace and press the A Button again to add the new pitcher to your team. Repeat this procedure until you've filled your pitching staff. Use same procedure for the opposing team.

Once you've built your bullpen, press the START Button and you will be taken to the Select Your Lineup screen. Use the procedure described above to fill the rest of your roster with your favorite bunch of big bats and gold gloves.

# GAME TIPS

## **Pitching**

Starting pitchers have more stamina than relievers. Keep an eye on your pitcher—when he begins to get tired he will start to breathe hard, his MPH will drop and you will have trouble controlling the direction of the pitch. The fastball and sinker use more stamina than normal pitches.

## **Batting**

Do not stand still in the batter's box. Try to fool the pitcher as to where you will be when the ball is thrown.

With all players, you can cock their bats back for a quicker, shorter swing. To do this, tap the A Button once. Be aware that you sacrifice power in favor of contact using this technique.

Although you can't fully control the hitting of fly balls or grounders, you can better your chances of getting such a hit by pressing the Directional Pad UP to swing for a grounder, or DOWN to swing for a fly.

## **General**

If you replace a fielder with a player who is not from the same position, he will make more errors than a player better suited for that position.

When you throw or run with the ball, choose the desired direction with the Directional Pad, then press the A or B Button. Do not select a direction, let go, then press the A or B Button. You must hold down the Directional Pad arrow until after the button is pressed.

# READING THE VIEW TEAMS SCREEN

The following is a list of abbreviations/definitions found in the View Teams Screen:

## BATTERS

- Avg:** **Batting Average.** This number does not change.
- HR:** **Home Runs.** This number will increase with each home run hit during a single game, then changes back to the original number at the start of each game.
- H:** **Hand.** (R, L, or S /Right, Left, or Switch hitter)
- P:** **Position the Field.**
- SP:** **Speed.** Range is 3-20.
- Con:** **Contact.** The ability to make contact with the ball. Range is 50-90.
- Pwr:** **Power.** How hard the ball is hit. Range is 10-92.
- C:** **Skin Color.** (light or dark)
- S:** **Stance.** (regular, power or fast) Range is R, P, or S.

## PITCHERS

- Hand:** **Pitching Hand.** (right or left)
- ERA:** **Earned Run Average.**
- D:** **Decline.** The ability to throw the sinker or knuckleball pitch. Range is 2-14.
- S:** **Strong Curve.** The ability to curve the ball across his body. Range is 4-15
- W:** **Weak Curve.** The ability to curve the ball against his body. Range is 2-12
- SL:** **Slow Pitch Speed.**
- ME:** **Medium Pitch Speed.**
- FA:** **Fast Pitch Speed.**
- C:** **Skin Color.** (light or dark)

At the time RBI '93 was produced, a tragic accident took the lives of Cleveland Indians' pitchers Tim Crews and Steve Olin. Tengen would like to offer condolences to their families, teammates and fans.

## BALTIMORE

## CALIFORNIA

## CHICAGO (NATIONAL)

## ATLANTA

BATTER	hand	speed	avg	hr	BATTER	hand	speed	avg	hr	BATTER	hand	speed	avg	hr
Anderson	L	18	271	21	Polonia	L	17	286	0	Sosa	R	11	260	8
Hulet	R	8	289	2	Solo	R	8	272	7	Grace	L	9	307	9
Holles	R	7	274	20	Curtis	R	16	259	10	Dawson	R	7	277	22
Devenaux	R	11	276	24	Gaeth	R	6	226	12	Sandberg	R	12	304	26
Gomez	R	7	265	17	Felix	S	8	246	9	Wilkins	L	8	270	8
C. Ripken	R	8	251	14	Fitzgerald	R	7	212	6	Buechelle	R	8	261	9
G. Davis	R	6	276	13	Brooks	R	6	216	8	May	L	8	274	8
Martinez	L	7	268	5	Gonzales	R	7	277	7	Salazar	R	6	208	5
Milligan	R	5	240	11	Stevens	L	6	221	7	Daniels	L	6	241	6
Tackett	R	6	240	5	Tingley	R	6	197	3	Smith	L	9	276	3
Orsuta	L	7	289	4	Hayes	L	8	225	4	Giardi	R	8	270	1
B. Ripken	R	6	230	4	Disarcina	R	8	247	3	Sanchez	R	8	251	1
Schiff	S	6	233	1	Easley	R	10	258	1	Viccarino	S	7	225	1
McCormick	S	10	245	0	Davis	L	6	250	0	Dascenzo	S	8	255	0

PITCHER	hand	era	PITCHER	hand	era	PITCHER	hand	era
Murphy	R	2.54	Abbott	L	2.77	Maddux	R	2.18
Lefferts	L	3.69	Langston	L	3.55	Morgan	R	2.54
McBride	R	4.24	Valera	R	3.73	Castillo	R	3.46
Supina	R	4.47	Finity	L	3.96	Boskie	R	5.01
Olsen	R	2.04	Harvey	R	2.83	Harkey	R	1.89
Fitzman	R	2.45	Grane	R	3.52	Scarlatti	R	2.89
Miller	R	2.61	Frey	L	3.57	Robinson	R	3.00
Schiff	R	3.43	Lewis	R	3.99	McElroy	L	3.55
Rhodes	L	3.83	Blyleven	R	4.74	Asenmacher	L	4.09
Morgan	R	5.84	Crim	R	5.17	Bullinger	R	4.66
Glavine	L	2.76						
Smitz	R	2.85						
Avery	L	3.20						
Leibrandt	L	3.36						
P. Smith	R	2.04						
Wojcik	R	2.54						
Freeman	R	3.22						
Mercker	L	3.42						
Pena	R	4.07						
Stanton	L	4.09						

**BOSTON**

**CHICAGO (AMERICAN)**

**FLORIDA**

**CINCINNATI**

BATTER	hand	speed	avg	hr	BATTER	hand	speed	avg	hr	BATTER	hand	speed	avg	hr
Boggs	L	8	259	7	Carr	S	20	288	4	Roberts	S	17	323	4
Zupic	R	7	276	3	Barberie	S	8	253	4	Larkin	R	11	304	12
Vaughn	L	7	234	13	Conine	R	8	293	20	Sanders	R	11	270	12
Brufanski	R	8	266	15	NW Outfield	L	11	274	26	O'Neill	L	7	246	14
Plantier	L	6	246	7	Natal	R	7	297	12	Sabo	R	7	244	12
Cooper	L	6	276	5	Scott	R	5	240	12	Oliver	R	7	270	10
Clark	R	6	210	5	Donnels	L	9	263	5	Doran	S	8	236	8
Flaherty	R	5	197	0	AA Third	R	10	281	5	Coles	R	8	312	3
Maehring	R	5	231	3	Fariss	R	8	261	10	Briggs	R	7	237	8
Reed	R	7	247	3	DW Outfield	L	11	280	10	Morris	L	8	271	6
Peña	R	7	241	1	Felix	S	8	246	9	Marlitez	L	10	254	3
Hatcher	R	7	238	1	Decker	R	7	272	8	Alexar	R	10	176	0
Warringham	L	7	235	1	JT Outfield	R	13	258	3	Branson	L	7	296	0
Rivers	R	8	245	0	Weiss	S	7	213	0	Benavides	R	6	231	1

PITCHER	hand	era	PITCHER	hand	era	PITCHER	hand	era
Clepper	R	2.41	JM Pitcher	R	1.84	Ripo	R	2.56
Vind	L	3.44	Léwis	R	3.55	Swindell	R	2.70
Dobson	R	4.08	Armstrong	R	4.66	Belcher	R	3.91
Hesketh	L	4.36	Bowen	R	5.63	Hammond	L	4.21
Quinn	R	2.19	Carsi	R	1.36	Foster	R	2.83
Fossett	L	2.43	Champano	R	2.66	Bankhead	R	2.93
Harris	R	2.50	Harvey	R	2.89	Chapton	L	2.99
Bolton	L	3.11	Carpenter	L	2.97	Dibble	R	3.07
Darwin	R	3.96	Rapp	R	3.37	Hanny	R	3.33
Reddon	R	4.25	Weathers	R	4.76	Huskin	R	5.03



## COLORADO

BATTER	hand	speed	avg	hr
Young	R	15	315	4
Bichette	R	11	287	5
Hayes	R	8	257	18
Tatum	R	9	326	19
Wedge	R	6	289	16
Castillo	R	9	238	15
RM. Second	R	9	248	12
Clark	R	8	242	12
Galaraga	R	7	243	10
Gastala	R	6	252	7
PC Third	R	6	239	3
Giardi	R	6	270	1
Benavides	R	6	231	1
Cole	L	11	278	0

## MONTREAL

BATTER	hand	speed	avg	hr
Buisson	R	20	276	14
Deshields	L	17	292	7
Alou	R	10	282	9
Walker	L	11	301	23
Wallach	R	6	223	9
Owen	S	8	289	7
Csanfocsi	R	7	241	6
Carier	R	7	218	5
Vanderwal	L	7	239	4
Galderton	R	8	255	3
Condore	R	7	302	2
Goehrum	R	8	268	2
Fletcher	L	7	243	2
Barberie	S	8	232	1

PITCHER	hand	era
Niedl	R	2.64
Henry	L	4.04
Ritz	R	5.62
Aldred	L	5.84
Reed	R	2.16
Holmes	R	2.29
Shepherd	R	2.48
Reynoso	R	2.72
Blair	R	3.37
Jones	R	3.07

## KANSAS CITY

BATTER	hand	speed	avg	hr
Jefferies	S	11	285	10
Miller	R	11	284	4
McReynolds	R	7	247	13
MacFarlane	R	7	234	17
Joyner	L	8	269	9
Bren	L	8	285	7
Koslowski	L	8	248	3
McRae	S	11	223	4
Willerson	L	11	250	2
Eisenreich	L	9	269	2
Rossy	R	7	215	1
Howard	S	8	224	1
Thuman	R	10	245	0
Mayne	L	6	225	0

PITCHER	hand	era
Martinez	R	2.47
Hill	R	2.68
Mabholz	L	3.32
Gardner	R	4.36
Hejas	R	1.43
Valdez	R	2.41
Fassaro	L	2.84
Wetzeland	R	2.92
Barnes	L	2.97
Sampson	R	3.13

## CLEVELAND

BATTER	hand	speed	avg	hr
Lofton	L	20	285	5
Whiten	S	11	254	9
Baerqa	S	9	312	20
Belle	R	8	260	34
Sorrento	L	7	269	18
Martinez	R	8	263	5
Thorne	L	7	205	2
Alomar	R	8	251	2
Hill	R	8	241	18
Lewis	R	8	264	5
Jacoby	R	7	261	4
Howard	S	10	277	2
Fisher	R	7	270	0
Osby	R	8	250	0

PITCHER	hand	era
Appier	R	2.46
Reed	R	3.68
Gubicza	R	3.72
Pichardo	R	3.95
Montgomery	R	2.18
Shifflett	R	2.60
Meacham	R	2.74
Gordon	R	4.59
Magnante	L	4.94
Bootsucker	R	4.98

PITCHER	hand	era
Nagy	R	2.96
Cook	L	3.82
Mesa	R	4.50
Arroyo	R	4.63
Lilloquist	L	1.75
Oliver	R	2.34
Payton	R	2.54
Wickham	L	3.07
Ryan	R	3.64
Johnson	R	4.53

**DETROIT**

BATTER	hand	speed	avg	hr
Pettis	S	14	202	1
Phillips	S	9	276	10
Deer	R	7	247	32
Fielder	R	4	244	35
Jettleton	S	5	238	32
Fryman	R	8	266	20
Whitaker	L	8	278	19
Livingstone	L	7	282	4
Carreon	R	6	232	10
Gladden	R	8	254	7
Barnes	R	7	273	3
Coyler	S	8	241	3
Kreuter	S	6	253	2
Bassman	L	6	232	1

PITCHER	hand	era
Leifer	R	4.18
Goffman	R	4.34
Tapan	L	4.36
Trotter	R	5.20
Kelly	R	2.13
Murray	L	3.00
Dorothy	R	3.88
Haley	R	3.94
Hendeman	R	3.96
Kristensen	R	4.58

BATTER	hand	speed	avg	hr
Knoiblauch	R	15	297	2
Davis	S	8	288	12
Mack	R	13	315	16
Purkett	R	11	329	19
Hrbek	L	7	244	15
Harper	R	5	307	9
Gagne	R	7	246	7
Leius	R	7	249	2
Munoz	R	7	270	12
Larkin	S	7	246	6
Bush	L	6	214	2
Webster	R	8	280	1
Reboullet	R	7	190	1
Pagniarulo	L	6	200	0

PITCHER	hand	era
Smalley	L	3.21
Erickson	R	3.40
Tapan	R	3.97
Kraeger	L	4.30
Wayne	L	2.63
Wilks	R	2.72
Edens	R	2.83
Aguilera	R	2.84
Guthrie	L	2.86
Kopper	L	4.42

BATTER	hand	speed	avg	hr
Coleman	S	13	275	2
Walker	S	10	289	4
Murray	S	8	261	16
Bonilla	S	7	249	19
Boston	L	9	249	11
Johnson	S	11	223	7
Hurdley	S	5	209	7
Schofield	R	8	205	4
Bass	S	11	269	9
Magadan	L	6	283	3
O'Brien	R	5	212	2
Randolph	R	8	252	2
Pecota	R	8	227	2
Gallagher	R	7	240	1

PITCHER	hand	era
Fernandez	L	2.73
Cone	R	2.86
Saberhagen	R	3.59
Gooden	R	3.67
Franco	L	1.64
Imms	R	2.86
Whitehurst	R	3.62
Young	R	4.17
Gibson	R	5.23
Jones	R	5.68

BATTER	hand	speed	avg	hr
Finley	L	17	292	5
Biggio	R	15	277	6
Bagwell	R	9	273	18
Anthony	L	7	239	19
Caminiti	S	8	294	13
Incalviglia	R	7	266	11
Cedeno	R	7	173	2
Guerrero	R	7	200	1
Gonzalez	L	8	243	10
Taubensee	L	6	222	5
Young	S	12	184	0
Ramirez	R	6	250	1
Candaele	S	7	213	1
Servais	R	5	239	0

PITCHER	hand	era
Harnisch	R	3.70
Kile	R	3.95
Henry	R	4.01
J. Jones	R	4.07
D. Jones	R	1.85
Hernandez	R	2.11
Boever	R	2.50
Portugal	R	2.66
Blair	R	4.00
Osuna	L	4.23

**NEW YORK (NATIONAL)**

**HOUSTON**





# MILWAUKEE

# OAKLAND

# PHILADELPHIA

# LOS ANGELES

BATTER	hand	speed	avg	hr	BATTER	hand	speed	avg	hr	BATTER	hand	speed	avg	hr	BATTER	hand	speed	avg	hr
Lestach	S	18	290	1	Henderson	R	17	283	15	Dykstra	L	13	301	6	Butler	L	17	309	3
Hamilton	L	16	298	5	Bordick	R	10	300	3	Duncan	S	12	267	8	Offerman	S	13	260	1
Molitor	R	14	320	12	Sierra	S	11	278	17	Daulton	L	9	270	27	Strawberry	L	7	237	5
Vaupen	R	10	228	23	McGuire	R	5	268	42	Hillins	S	8	270	27	Karras	R	7	257	20
Stubbs	L	8	229	9	Baines	L	7	253	16	Kruk	L	8	323	10	Webster	S	10	267	6
Yount	R	10	264	8	Steinbach	R	7	279	12	Chamberslam	R	8	258	9	Hansen	L	5	214	6
Nilsson	L	7	232	4	Lansford	R	7	262	7	Amaro	S	10	219	7	Hernandez	R	5	260	3
Seitzer	R	9	270	5	Browne	S	8	287	3	Jordan	R	7	304	4	Benzinger	R	8	239	4
Bechette	R	11	287	5	Ready	R	6	200	3	Lake	R	5	245	1	Davis	R	11	226	5
Jaha	R	12	226	2	Fox	S	8	238	3	Sveum	S	5	178	2	Sharperson	R	7	300	3
Surhoff	L	9	252	4	Blairnschap	R	11	241	3	Morandini	L	9	265	3	Scioscia	L	7	221	3
Fletcher	R	11	275	3	Dalk	R	6	220	2	Bell	S	8	204	1	Young	R	8	253	1
Melchior	R	7	182	0	Wilson	R	13	270	0	Bastie	R	5	206	1	Samuel	R	7	262	0
Gantous	L	7	246	1	Weiss	S	7	212	0	Jayner	S	11	249	1	Hanno	L	11	271	0

PITCHER	hand	era	PITCHER	hand	era	PITCHER	hand	era	PITCHER	hand	era
Veraman	R	3.20	Schilling	R	2.35	Candiotti	R	3.00	Gross	R	3.17
Navarro	R	3.30	Mutholland	L	3.81	Gross	R	3.17	Ojeda	L	3.63
Boozer	R	3.62	Delson	R	4.37	Ojeda	L	3.63	Hershise	R	3.67
Bryant	R	4.57	Abbott	L	5.13	Hershise	R	3.67	Howell	R	1.54
Bliffen	R	1.79	Ritchie	L	3.00	Howell	R	1.54	Gott	R	2.45
Alston	R	1.85	Riversa	R	3.07	Gott	R	2.45	Candelaria	L	2.84
Fyfe	R	1.67	Ayrault	R	3.12	Candelaria	L	2.84	Martinez	R	4.00
Pickac	L	2.96	Shepherd	R	3.27	Martinez	R	4.00	McDowell	R	4.09
Quinn	L	3.23	Hartney	R	3.44	McDowell	R	4.09	Wilson	L	4.19
Harty	R	4.01	Williams	L	3.76	Wilson	L	4.19			



# NEW YORK (AMERICAN)

# SEATTLE

# PITTSBURGH

# SAN DIEGO

BATTER	hand	speed	avg	hr
Kelly	R	13	272	10
Williams	S	8	260	5
Nokes	L	5	224	22
Tartabull	R	7	266	25
Hayes	R	8	257	18
Mattingly	L	6	288	14
Maas	L	6	248	11
Velarde	R	7	272	7
Hall	L	7	280	15
Leyritz	R	6	267	7
Stanley	R	5	249	8
Kelly	R	8	226	7
Gallego	R	7	254	3
Spanosky	R	8	268	2

PITCHER	hand	era
Pejer	R	2.87
Garrett	L	4.25
Kassamiricks	R	4.36
Santerson	R	4.93
Fall	R	1.56
Hoyes	L	2.45
Burke	R	3.25
Mohr-egge	R	3.30
Mullins	R	3.45
Hedvall	R	3.84

BATTER	hand	speed	avg	hr
Gotto	R	12	259	5
E. Martinez	R	10	343	18
Bubner	R	6	243	25
Griffey Jr	L	10	308	27
T. Martinez	R	7	257	16
O'Brien	L	5	222	14
Parnish	R	6	233	12
Mitchell	R	6	286	9
Valle	R	5	240	9
Boone	R	6	194	4
Birley	L	8	275	5
Reynolds	S	10	247	3
Cochrane	S	7	250	2
Vizque	S	11	294	0

PITCHER	hand	era
Fleming	L	3.39
Johnson	L	3.77
Hanson	R	4.82
Leary	R	5.36
Barton	L	2.92
Nelson	R	3.44
Powell	L	4.58
Schroder	R	4.70
Swain	L	4.74
Jones	R	5.69

BATTER	hand	speed	avg	hr
Van Slyke	L	12	324	14
Stlaughter	R	8	345	4
King	R	7	231	14
Bonds	L	16	311	34
Bell	R	8	264	9
Varsho	L	9	222	4
Mered	S	8	247	6
Radius	R	11	256	3
McClendon	R	8	253	3
Lavalliere	L	8	256	2
Espy	S	8	258	1
Wehner	R	7	179	0
Cole	L	11	278	0
Lind	R	6	235	0

PITCHER	hand	era
Drabek	R	2.77
Smith	L	3.06
Tomlin	L	3.41
Jackson	L	3.84
Wakerfield	R	2.15
Patterson	L	2.92
Belinda	R	3.15
Waik	R	3.20
Mason	R	4.09
Neagle	L	4.48

BATTER	hand	speed	avg	hr
Fernandez	S	12	275	4
Gwynn	L	8	317	8
Silverfield	R	8	330	30
McGarr	L	8	286	35
Jackson	R	11	249	17
Clark	R	8	242	12
Santiago	R	7	251	10
Taufel	R	6	224	6
Walters	R	7	251	4
Ward	R	8	197	3
Stillwell	S	7	227	2
Stephenson	L	7	155	0
ShIPLEY	R	6	248	0
Azocar	L	6	190	0

PITCHER	hand	era
Deshaies	L	3.28
Berres	R	3.35
Lefferts	L	3.69
Horst	L	3.85
Maddux	R	2.37
Rodriguez	L	2.37
Clements	R	2.66
Melendez	R	2.92
Anderson	R	3.34
Myers	L	4.29

## TORONTO

## TEXAS

## ST. LOUIS

## SAN FRANCISCO

BATTER	hand	speed	avg	hr	BATTER	hand	speed	avg	hr	BATTER	hand	speed	avg	hr
Alomar	S	17	310	8	Huson	L	11	251	4	O. Smith	S	16	295	0
White	S	15	248	17	Palmero	L	8	258	22	Thompson	L	12	293	4
Winfield	R	8	290	25	Palmer	R	8	229	26	Jose	S	13	295	14
Carter	R	11	254	34	Gonzalez	R	6	250	43	Lankford	L	16	293	20
Olerud	L	6	284	16	Canseco	R	7	244	26	Pena	S	11	305	7
Borders	R	5	242	13	Reimer	L	8	257	16	Galaraga	R	7	243	10
Kent	R	7	240	8	Downing	R	6	278	10	Zelle	R	8	257	7
Graber	R	8	229	11	Rodriguez	R	6	250	8	Alicia	S	9	245	2
Maldonado	R	6	272	20	Fariss	R	7	217	3	Hudler	R	8	245	3
Sprague	R	5	234	1	Thon	R	9	247	4	Gilkey	R	11	302	7
Bell	R	10	242	2	Campesea	S	11	188	1	Jordan	R	10	207	5
Lee	S	7	263	3	Frye	R	8	256	1	Pagnozzi	R	7	249	7
Papa	R	6	252	0	Petralli	L	5	198	1	Perry	L	6	238	1
Graber	S	7	233	0	Newman	S	8	220	0	Gedman	L	5	219	1

PITCHER	hand	era	PITCHER	hand	era	PITCHER	hand	era
Johnson	R	2.64	Tewksbury	R	2.16	Swift	R	2.08
Key	L	3.53	Carmier	L	3.58	Burkett	R	3.84
Morris	R	4.04	Osborne	L	3.77	Black	L	3.97
Sprague	R	4.50	Olivas	R	3.84	Wilson	L	4.21
Vard	R	1.95	Perez	R	1.84	Beck	R	1.76
Harmon	R	2.25	Worrell	R	2.11	Brantley	R	2.95
Conce	R	2.54	Carpenter	L	2.27	Hickerson	L	3.09
Espinosa	R	3.08	L. Smith	R	3.12	Pena	L	3.48
Shaw	R	5.04	McClure	L	3.17	Jackson	R	3.73
Watts	L	5.40	Clark	R	4.45	Righetti	L	5.05

## AMERICAN ALL-STARS

## NATIONAL ALL-STARS

BATTER	hand	speed	avg	hr
Anderson	L	18	271	21
Alomar	S	17	310	8
Carter	R	11	264	34
McGriff	R	5	268	42
Griffey Jr.	L	10	308	27
Baerga	S	9	312	20
Martinez	R	10	343	18
Rodriguez	R	6	260	8
Puckett	R	11	329	19
Sierra	S	11	278	17
Ripken	R	8	251	14
Molitor	R	14	320	12
Bonds	L	8	259	7
Alfonso	R	8	251	2

BATTER	hand	speed	avg	hr
Roberts	S	17	323	4
Smith	S	16	295	0
Bonds	L	16	311	34
McGriff	L	8	286	35
Sheffield	R	8	330	33
Daulton	L	9	270	27
Sandberg	R	12	304	26
Walker	L	11	301	23
Pendleton	S	8	311	21
Clark	L	9	300	16
Kruk	L	8	323	10
Santiago	R	7	251	10
Biggio	R	15	277	6
Gwynn	L	8	317	6

PITCHER	hand	era
Musina	R	2.54
Nagy	R	2.96
McBryden	R	3.18
Brown	R	3.32
Edwards	R	1.91
Montgomery	R	2.18
Stevens	R	2.41
Goetzan	R	2.64
Aguilera	R	2.84
Lampson	L	3.66

PITCHER	hand	era
Maddux	R	2.16
Martinez	R	2.47
Glavine	L	2.76
Smoltz	R	2.85
Franco	L	1.64
Beck	R	1.76
Jones	R	1.85
Tejksbury	R	2.16
Cone	R	2.88
Charlton	L	2.99

**TORONTO 91**

**MINNESOTA 91**

**PITTSBURGH 91**

**ATLANTA 91**

BATTER	hand	speed	avg	hr
Alomar	S	18	295	9
Whie	S	15	282	17
Gruber	R	9	252	20
Carter	R	11	273	33
Olerud	L	7	256	17
Maldonado	R	8	260	12
DP-First	L	7	239	11
Myers	L	5	262	8
Borders	R	5	244	5
MW Center	S	10	241	2
Mullinks	L	7	250	2
RG ShortStop	R	5	195	1
Leach	R	6	215	1
Lee	S	8	234	0

PITCHER	hand	era
Carroll	R	2.65
Key	L	3.05
Wells	L	3.72
Stottling	R	5.78
Herke	R	2.31
Ward	R	2.77
Giachini	R	2.99
Tipple	R	3.16
Steb	R	3.17
Acker	R	5.28

BATTER	hand	speed	avg	hr
Knoblauch	R	13	281	1
Mack	R	11	310	18
Hrbek	L	8	284	20
Davis	S	8	277	29
Puckett	R	10	319	15
Harber	R	7	311	10
Gagne	R	9	265	8
Leips	R	6	286	5
Bush	L	8	303	6
Gladden	R	12	247	6
Pagliarulo	L	7	279	6
Larkin	S	8	286	2
Ortiz	R	6	209	0
Newman	S	8	191	0

PITCHER	hand	era
Tapajns	R	2.99
Erickson	R	3.18
Morris	R	3.43
AA Pitcher	L	4.95
Aguilera	R	2.35
Willis	R	2.63
Leach	R	3.61
Guthrie	L	4.32
SB Pitcher	R	4.42
DW Pitcher	L	4.54

BATTER	hand	speed	avg	hr
Redus	R	11	246	7
Varsho	L	10	273	4
Bomilla	S	8	302	18
Bonds	L	16	292	25
Bell	R	10	270	16
Merced	S	8	275	10
Bucchele	R	6	246	4
Lavalliere	L	7	289	3
VanSlyke	L	10	265	17
McClelland	R	7	288	7
Lind	R	8	265	3
Espy	S	9	244	1
Wilketson	S	7	188	2
Slaughter	R	7	295	1

PITCHER	hand	era
Tomlin	L	2.98
Drabek	R	3.07
Smiley	L	3.08
Smith	L	3.20
Mason	R	3.03
Langrum	R	3.18
Belinda	R	3.45
Paterson	L	4.11
Heaton	L	4.33
Kipper	L	4.65

BATTER	hand	speed	avg	hr
Mixon	S	20	297	0
Treadway	L	8	320	3
Fendelton	S	10	319	22
Gant	R	14	251	32
Justice	L	8	275	21
Hunter	R	8	251	12
Bream	L	7	253	11
Blauser	R	7	259	11
Sanders	L	14	191	4
Berryhill	S	7	188	5
Smith	R	8	275	7
Oison	R	8	241	6
Lemke	S	7	234	2
Berland	R	6	249	0

PITCHER	hand	era
Glavine	L	2.54
Avery	L	3.38
Leibbrandt	L	3.49
Smoltz	R	3.80
Berenguer	R	2.24
Pena	R	2.40
Menser	L	2.58
Stanton	L	2.88
Freeman	R	3.00
JC Pitcher	R	3.91

### BOSTON 90

BATTER	hand	speed	avg	hr
Greenwell	L	9	297	14
Jody Reed	R	8	289	5
Brunansky	R	8	267	15
Burks	R	10	296	21
Riviera	R	7	225	7
Naehring	R	6	271	2
Quintana	R	7	287	7
Pena	R	8	263	7
DE Outfield	R	7	249	13
MM Outfield	R	7	286	4
Boggs	L	7	302	6
KR Outfield	R	7	272	2
Morgan	R	5	241	0
MB Second	R	7	226	0

PITCHER	hand	era
Hammons	R	1.93
Gooden	R	3.36
DK Pitcher	R	3.97
Harris	R	4.00
Pacorelli	R	3.16
Buller	R	3.38
Jeff Gray	R	4.44
Lopez	R	4.68
Reed	R	4.82
MM Outfield	R	4.88

### OAKLAND 90

BATTER	hand	speed	avg	hr
R Henderson	R	18	325	28
Lansford	R	10	268	3
Canseco	R	11	274	37
McGwire	R	5	235	39
D Henderson	R	6	271	20
Stinkingbich	R	6	251	9
Gallego	R	7	206	3
Weiss	S	8	265	2
Baines	L	7	284	16
Jose	S	7	264	8
RH Catcher	L	5	213	5
JJ Outfield	L	7	192	2
Randolph	R	8	257	1
Blankenship	R	7	191	0

PITCHER	hand	era
Stewart	R	2.56
Welch	R	2.95
Sanderson	R	3.88
Moore	R	4.65
Eckersley	R	0.61
Nelson	R	1.57
Klink	L	2.04
Honeycutt	L	2.70
TB Pitcher	R	2.97
Young	L	4.84

### PITTSBURGH 90

BATTER	hand	speed	avg	hr
Van Slyke	L	11	284	17
Reclus	R	10	247	6
Bonilla	S	8	280	32
Bonds	L	17	301	33
Bream	L	8	270	15
King	R	7	245	14
CM First	R	6	240	10
Slaughter	R	7	300	4
Ball	R	10	254	7
McCleendon	R	6	164	2
LaValliere	L	7	258	3
Backman	S	8	292	2
Lind	R	8	261	1
RR Outfield	S	10	288	0

PITCHER	hand	era
Smith	L	2.54
Drabek	R	2.76
Waik	R	3.75
Smiley	L	4.64
Landrum	R	2.13
Tomlin	L	2.54
Patterson	L	2.95
Kipper	L	3.02
Heaton	L	3.45
Belinda	R	3.55

### CINCINNATI 90

BATTER	hand	speed	avg	hr
Larkin	R	14	301	7
Duncan	R	12	305	10
Davis	R	11	260	24
Sabo	R	12	270	25
O'Neill	L	8	270	16
Braggs	R	8	299	6
Oliver	R	5	231	8
Doran	S	12	300	7
Morris	L	9	340	7
Hatcher	R	14	276	5
Winningham	L	11	256	3
Benzinger	S	8	253	5
Reed	L	7	251	3
RO Second	S	8	299	0

PITCHER	hand	era
Rijo	R	2.70
Armstrong	R	3.42
Jackson	L	3.61
Browning	L	3.80
Dibble	R	1.74
Myers	L	2.08
Charlton	L	2.74
TL Pitcher	R	3.49
TB Pitche	L	3.86
RM Pitcher	R	4.28



**TORONTO 89**

**OAKLAND 89**

**CHICAGO 89 (NATIONAL)**

**SAN FRANCISCO 89**

BATTER	hand	speed	avg	hr	BATTER	hand	speed	avg	hr	BATTER	hand	speed	avg	hr
TL Outfield	R	17	229	0	R Henderson	R	20	274	12	Dunston	R	12	278	9
Fernandez	S	13	257	11	Lansford	R	15	336	2	Smith	L	10	324	9
Gruber	R	9	290	18	Canseco	R	8	269	17	Dawson	R	9	252	21
McGriff	L	8	269	36	McGuire	R	5	231	33	Sandberg	R	11	290	30
Bell	R	8	297	18	DP Outfield	L	5	264	22	Grace	L	10	314	13
LM Outfield	L	12	221	11	KP First	L	5	242	7	McGlendon	R	7	286	12
EW Catcher	L	7	262	11	Stenbach	R	7	273	7	AS Shortstop	S	6	282	9
NL Second	S	11	263	5	Phillips	S	8	262	4	MW Outfield	L	7	243	7
Felix	S	12	258	9	D Henderson	R	8	250	15	VL Third	R	7	235	7
MW Outfield	S	11	251	5	RH Catcher	L	6	228	5	Walton	R	12	293	5
Lee	S	8	260	3	Gallego	R	8	252	3	Berryhill	R	6	257	5
Borders	R	7	257	3	Weiss	S	7	231	3	Webster	S	11	257	3
Mims	L	6	238	3	Blankenship	R	9	232	1	DR Shortstop	R	8	263	1
BB Catcher	R	7	173	1	Javier	S	9	248	1	Wilkinson	S	8	244	1

PITCHER	hand	era	PITCHER	hand	era	PITCHER	hand	era
JP Pitcher	L	3.07	Moore	R	2.61	Maddux	R	2.95
Stein	R	3.35	Weich	R	3.00	Bielecki	R	3.14
Key	L	3.88	Stewart	R	3.32	Sutcliffe	R	3.66
Fanoglia	L	3.93	Barns	R	4.36	PK Pitcher	L	4.39
Heuck	R	1.92	Eckersley	R	1.56	Lancaster	R	1.36
Wells	L	2.40	JC Pitcher	R	1.88	Williams	L	2.64
FW Pitcher	R	3.66	TB Pitcher	R	2.24	JP Pitcher	R	3.77
Ward	R	3.77	Honeycutt	L	2.35	Sanderson	R	3.94
Stokamyre	R	3.88	Nelson	R	3.26	Assenmacher	L	3.99
TC Pitcher	L	5.67	Young	L	3.73	Wilson	L	4.20
Garnetts	R	2.28	RR Pitcher	R	2.94	Robinson	R	3.43
BK Pitcher	L	5.13	Lafferts	L	2.69	SB Pitcher	R	2.87
PS Outfield	L	8	221	6	ML Pitcher	R	3.17	
ER Shortstop	L	6	278	7	DB Pitcher	L	3.46	
TK Catcher	L	5	239	5	AH Pitcher	L	3.76	
GL Second	R	8	252	4	Manwaring	R	4.07	
OBerkfell	L	7	269	2				
DM Outfield	R	10	265	1				
Urbix	S	8	221	1				



**BOSTON 88**

**OAKLAND 88**

**NEW YORK 88 (NATIONAL)**

**LOS ANGELES 88**

BATTER	hand	speed	avg	hr	BATTER	hand	speed	avg	hr	BATTER	hand	speed	avg	hr
Banks	R	13	294	18	Lansford	R	13	279	7	Dykstra	L	13	270	8
Boggs	L	8	366	5	Polonia	L	13	292	2	Teufel	R	5	234	4
DE Groot	R	8	293	21	McGwire	R	6	260	32	McReynolds	R	11	288	27
Greenwell	L	12	325	22	Cansack	R	15	307	42	Strawberry	L	13	269	39
Parnish	R	6	259	7	Henderson	R	6	304	24	Johnson	S	12	230	24
Beninger	S	6	254	13	Steinbach	R	7	265	9	RH First	L	6	276	11
Gedman	L	5	231	9	Wiers	S	7	250	3	Carter	R	5	242	11
Owen	S	6	249	5	GH Second	R	7	255	3	Elster	R	5	214	9
JR Left	R	7	264	15	DP Outfid	L	6	257	12	NW Outfid	S	11	295	8
Gerole	R	7	269	3	RH Catcher	L	6	257	7	Sasser	S	7	285	1
KR Outfid	R	8	192	1	DB Left	R	5	220	7	BL Outfid	L	6	231	0
MB Second	R	7	283	1	Javier	S	11	257	2	Magadan	L	5	277	1
Reed	R	6	293	1	Phillips	S	7	203	2	LM Left	R	8	147	0
Andrulis	L	9	230	0	Gallego	R	6	209	2	Backman	S	9	303	0

PITCHER	hand	era	PITCHER	hand	era	PITCHER	hand	era
Glenn	R	2.93	Stewart	R	3.23	Dyda	L	2.88
Hunt	L	3.66	Welch	R	3.64	Fernandez	L	3.03
DEP Pinner	R	5.34	Davis	R	3.70	Goodell	R	3.19
McHarris	R	5.97	Young	L	4.14	Darling	R	3.25
Brody	R	2.63	Eckersley	R	2.95	Myers	L	1.72
Smith	R	2.80	Cataret	L	2.89	Cone	R	2.22
EV Pinner	R	3.19	EP Pitcher	R	3.00	Leach	R	2.54
Lynn	R	3.48	Misson	R	3.06	McDowell	R	2.63
W.C. Pitcher	R	3.50	TB Pitcher	R	3.16	McClure	L	4.09
Blyden	L	4.75	Honeycutt	L	3.50	Munoz	R	4.50
Herziger	R	2.25	Belcher	R	2.91	Leary	R	2.91
Leary	R	2.91	FV Pitcher	L	4.24	BH Pitcher	R	1.70
Pena	R	1.91	Howell	R	2.08	JT Pitcher	L	2.41
Drosco	L	2.72	Crews	R	3.14			





DETROIT 87

MINNESOTA 87

ST. LOUIS 87

SAN FRANCISCO 87

BATTER	hand	speed	avg	hr	BATTER	hand	speed	avg	hr	BATTER	hand	speed	avg	hr
Gibson	L	13	277	24	Glendon	R	12	249	8	Coleman	S	20	289	3
Trammell	R	12	343	28	Puckett	R	10	332	28	Smith	S	16	303	0
Nokes	L	7	282	32	Brunanski	R	8	259	32	Pendleton	S	11	286	12
DE First	L	7	257	34	Hrodek	L	7	285	34	Clark	R	6	286	35
CL Outfld	R	6	277	20	Gaeth	R	8	257	31	McGee	S	12	285	11
Whitaker	L	11	265	16	TL Catcher	R	6	191	16	Lundeman	R	7	208	8
BM Left	R	7	279	14	Gagne	R	8	265	10	Pena	R	8	214	5
LH Left	R	8	324	9	RS Second	S	6	275	8	TB Third	L	11	277	0
TB Third	R	8	241	13	Bush	L	8	253	11	Morris	L	10	261	3
Bergman	L	8	273	6	SL Second	R	7	238	8	CF Outfld	L	11	285	3
MH Catcher	R	7	281	8	Larkin	S	7	266	4	Lake	R	7	251	2
DC Third	R	6	181	4	MD Outfld	R	11	267	1	Johnson	L	14	220	0
PS Outfld	L	11	259	6	SB Catcher	R	5	171	1	TH Second	S	11	263	2
JG First	L	5	202	2	Newman	S	11	221	0	Duqueno	S	8	286	1

PITCHER	hand	era	PITCHER	hand	era	PITCHER	hand	era
Viola	L	2.90	Magrane	L	3.54	AH Pitcher	L	3.58
BB Pitcher	R	4.01	GM Pitcher	L	3.73	Downs	H	3.63
LS Pitcher	R	4.37	Cox	R	3.88	ML Pitcher	R	3.68
MS Pitcher	R	5.94	BF Pitcher	R	4.32	MK Pitcher	R	4.80
Beaugnier	R	3.94	Wornell	R	2.66	Robinson	R	2.74
Reardon	R	4.48	Dayley	L	2.66	JR Pitcher	R	2.79
KA Pitcher	R	4.54	RH Pitcher	L	3.82	DD Pitcher	L	3.20
GF Pitcher	R	4.98	JT Pitcher	L	3.84	Garnetts	R	3.22
JN Pitcher	R	6.26	PP Pitcher	L	4.38	Lefferts	L	3.23
DS Pitcher	L	6.89	BD Pitcher	R	4.47	RR Pitcher	R	4.32

**BOSTON 86**

**CALIFORNIA 86**

**NEW YORK 86 (NATIONAL)**

**HOUSTON 86**

BATTER	hand	speed	avg	hr	BATTER	hand	speed	avg	hr	BATTER	hand	speed	avg	hr
MB Second	R	11	286	4	GP Outfld	S	17	258	6	Dykstra	L	14	295	8
Boggs	L	6	357	8	MR Outfld	L	7	366	2	MW Outfld	S	13	289	9
DE Outfld	R	7	259	26	Downing	R	7	267	20	GC Catcher	R	6	255	24
DB Left	R	6	238	31	Joyner	L	7	290	22	Strawberry	L	13	259	27
JR Left	R	6	324	20	RJ Infield	R	6	241	18	KH First	L	6	310	13
BB First	L	7	267	18	DD Shortstop	R	6	256	15	Johnson	S	8	245	10
Gedman	L	6	258	16	Schofield	R	13	249	13	RK Third	R	7	298	11
RD Shortstop	R	7	237	2	BB Catcher	R	5	222	7	Teufel	R	6	247	4
TA Outfld	R	7	254	11	JH Third	L	7	272	4	GF Outfld	R	6	227	13
Lyons	L	8	250	1	RW Second	L	7	219	3	Mitchell	R	7	277	12
Owen	S	8	183	1	JN Catcher	L	6	221	1	EH Catcher	R	6	265	4
ER Shortstop	R	6	210	2	White	S	8	236	1	DH Outfld	L	8	282	5
MS Catcher	R	5	193	1	GP Outfld	R	7	264	0	LM Outfld	S	5	277	2
DS Infield	R	5	128	0	McLennore	S	6	250	0	Backman	S	10	320	1

PITCHER	hand	era	PITCHER	hand	era	PITCHER	hand	era
Emmons	R	2.48	Watt	R	2.84	MS Pitcher	R	2.22
Blust	L	2.99	McCaskill	R	3.36	BK Pitcher	L	3.14
DB Pitcher	R	3.78	DS Pitcher	R	3.74	JD Pitcher	L	3.25
AP Pitcher	R	5.38	RR Pitcher	R	5.50	Ryan	R	3.34
LS Pitcher	R	1.41	Candelana	L	2.54	Darwin	R	2.32
SC Pitcher	R	3.92	DM Pitcher	R	2.97	CK Pitcher	R	2.59
BS Pitcher	R	4.37	GL Pitcher	L	3.15	Smith	R	2.73
MS Pitcher	R	4.38	Finley	L	3.30	Andersen	R	2.78
JS Pitcher	L	4.84	TF Pitcher	L	3.51	AL Pitcher	R	3.46
JS Pitcher	R	4.94	OC Pitcher	R	3.66	MK Pitcher	R	4.22

**TORONTO 85**

**KANSAS CITY 85**

**ST. LOUIS 85**

**LOS ANGELES 85**

BATTER	hand	speed	avg	hr	BATTER	hand	speed	avg	hr	BATTER	hand	speed	avg	hr
LM Outfield	L	16	259	18	Wilson	S	18	278	4	McGee	S	20	353	10
DG Second	R	13	282	8	Smith	R	16	257	6	Coleman	S	20	267	1
Barfield	R	13	289	27	Brett	L	10	335	30	VanSlyke	L	15	259	13
Bell	R	12	275	28	SB First	R	5	243	36	Clark	R	7	291	22
EW Catcher	L	6	245	19	FW Second	R	8	249	22	TH Second	S	14	302	8
WU First	L	8	275	15	DM Outfield	R	7	222	17	Smith	S	14	276	6
Mulliniks	L	6	295	10	JS Catcher	R	6	245	10	Pendleton	S	11	240	5
GI Third	R	8	313	7	JD First	L	6	267	4	DP Catcher	L	8	221	0
BM Catcher	R	7	163	4	HM Left	R	5	259	14	TL Left	R	8	280	4
Fielder	R	8	312	4	PS Outfield	L	10	228	3	SB Outfield	L	5	239	1
LM Second	L	7	212	2	JW Catcher	R	6	236	1	Smith	R	7	262	0
Fernandez	S	11	289	2	OC Shortstop	R	6	204	2	TL Second	R	9	207	0
Lee	S	7	200	0	BB Shortstop	S	7	188	1	ID Third	R	7	222	0
Webster	S	7	251	0	LJ Left	R	5	211	0	TM Catcher	R	6	225	0

PITCHER	hand	era	PITCHER	hand	era	PITCHER	hand	era
Sabo	R	2.48	Leibrandt	L	2.69	Hershisser	R	2.02
Key	L	3.00	Sabierhagen	R	2.87	FV Pitcher	L	2.45
Dunbar	R	3.45	Jackson	L	3.42	JR Pitcher	L	2.92
JC Pitcher	R	3.76	Black	L	4.33	Honeycutt	L	3.42
Hendrix	R	2.02	MH Pitcher	R	1.93	Walch	R	2.31
BC Pitcher	R	2.99	DD Pitcher	R	2.37	TM Pitcher	R	2.71
GL Pitcher	L	5.10	Farr	R	3.11	Howell	R	3.77
Ackert	R	3.23	Gubicza	R	4.06	Howe	L	4.91
Lallop	R	3.32	J8 Pitcher	R	4.07	Paria	R	8.31
RM Second	R	4.47	MJ Pitcher	L	4.78	BH Pitcher	R	9.00



**DETROIT 84**

**KANSAS CITY 84**

**CHICAGO 84 (NATIONAL)**

**SAN DIEGO 84**

BATTER	hand	speed	avg	hr	BATTER	hand	speed	avg	hr	BATTER	hand	speed	avg	hr
Gibson	L	15	282	27	Wilson	S	17	278	4	Sandberg	R	17	314	19
Trammell	R	12	314	14	LS Right	L	11	257	6	BD Center	R	17	278	3
GL Outfld	R	8	287	20	FW Second	R	9	249	22	LD First	L	11	279	23
Parrish	R	6	237	33	SB First	R	5	244	35	RC Third	R	5	240	25
DE Left	L	5	232	16	DM Left	L	5	222	17	JD Catcher	R	7	256	19
Whitaker	L	7	289	13	HM Outfld	R	7	264	14	KM Right	R	8	279	16
Johnson	S	8	248	12	Brett	L	6	284	13	GW Center	R	8	235	3
Bergman	L	7	273	7	JO Infield	S	7	263	4	DO Shortstop	S	8	194	1
DL Catcher	L	8	284	12	JS Left	L	7	298	10	RH Catcher	L	7	333	2
Jfs Left	L	7	267	8	PS Outfld	R	9	230	3	GM Right	R	11	291	14
LH Left	R	8	280	7	DC Shortstop	L	7	265	2	Lake	R	5	222	2
TB Inrd	R	8	246	5	BB Shortstop	S	7	194	1	Hall	L	8	280	4
RC First	R	7	287	5	JW Catcher	R	8	234	1	Certo	R	10	274	0
RK Inrd	R	8	286	2	LJ Left	R	6	211	0	LB Shortstop	S	8	223	0

PITCHER	hand	era	PITCHER	hand	era	PITCHER	hand	era
DP Pitcher	R	3.24	Black	L	3.12	Sutcliffe	R	2.69
Breninger	R	3.48	Lebrandt	L	3.63	Eckersley	R	3.03
Morris	R	3.60	Gibucci	R	4.05	Sanderson	R	3.14
MW Pitcher	R	4.00	LG Pitcher	L	5.18	ST Pitcher	L	3.41
WR Pitcher	L	1.92	DD Pitcher	R	2.64	RM Pitcher	L	3.38
AL Pitcher	R	2.94	JB Pitcher	R	3.40	RB Pitcher	R	3.46
RD Pitcher	R	3.38	Saberhagen	R	3.48	Smith	R	3.65
DF Pitcher	R	3.74	MH Pitcher	R	4.20	TS Pitcher	R	3.82
DF Pitcher	R	3.75	Jackson	L	4.26	GF Pitcher	R	4.09
MS Pitcher	R	4.50	MJ Pitcher	L	4.89	RR Pitcher	R	5.17
MT Pitcher	L	2.97						
Whitson	R	3.24						
ES Pitcher	R	3.48						
AH Pitcher	R	4.68						
Lettricks	L	2.13						
Harris	R	2.70						
GG Pitcher	R	2.90						
DD Pitcher	L	2.93						
GB Pitcher	R	3.30						
LD Pitcher	R	5.48						

**AMERICAN ALL-STARS 89**

**NATIONAL ALL-STARS 89**

**AMERICAN ALL-STARS 90**

**NATIONAL ALL-STARS 90**

BATTER	hand	speed	avg	hr
Jackson	R	17	256	32
Puckett	R	10	339	9
Sierra	S	12	306	29
McGuire	R	8	231	33
Fletcher	S	8	258	26
Mattingly	L	9	304	29
Ripken	R	8	257	21
Gaetti	R	13	254	19
J.L. Center	R	6	254	24
Barnes	L	12	270	16
France	R	8	316	13
Steinbach	R	11	273	7
Saunders	R	9	316	5
Bonds	L	9	331	3

PITCHER	hand	era
Fisher	L	2.57
Quisenberry	R	3.04
Johnson	R	3.20
Scott	L	3.37
Ryerson	R	3.98
Wright	R	2.34
Stewart	L	2.35
Stewart	R	3.32
Harmon	L	3.45
Houston	R	3.70

BATTER	hand	speed	avg	hr
Gwynn	L	17	337	4
Smith	S	17	273	2
Johnson	S	8	287	36
Mitchell	R	12	291	47
E. Davis	R	8	281	34
G. Davis	R	8	270	34
Sandberg	R	8	290	30
Santiago	R	11	236	16
Hayes	L	13	259	26
Bonilla	S	8	281	24
Clark	L	10	333	23
Dawson	R	13	254	21
Garcera	R	12	312	17
Pena	R	7	262	4

PITCHER	hand	era
Hershiser	R	2.31
R.P. Puckett	R	2.94
Smoltz	R	2.94
Sabathe	R	3.66
Howell	R	1.58
Landrum	R	1.67
M. Davis	L	1.85
Barke	R	2.55
Williams	L	2.76
Francis	L	3.12

BATTER	hand	speed	avg	hr
R. Hernandez	R	18	325	28
Sax	R	16	260	4
McGuire	R	5	235	39
Felister	R	6	277	51
Carasco	R	11	274	37
Gruber	R	11	271	31
Parrish	R	7	266	24
Gutley Jr.	L	11	300	22
Burks	R	10	296	21
Bell	R	7	265	21
Ripken	R	7	250	21
France	R	13	296	11
Austen	R	7	290	9
Boggs	L	7	302	6

PITCHER	hand	era
Emby	L	2.40
Sheib	R	2.90
Wetzel	R	3.95
Johnson	L	3.55
Edgerly	R	0.61
Trapp	R	1.85
Clemens	R	1.93
James	R	2.31
Dillon	R	2.42
Saunders	L	3.25

BATTER	hand	speed	avg	hr
Bonds	L	17	301	33
Dykstra	L	17	325	9
Strawberry	L	9	277	37
Santberg	R	12	306	46
Williams	R	8	277	33
Sabo	R	12	270	25
Clark	L	8	295	19
Santiago	R	8	270	11
Mitchel	R	8	290	35
Bamala	S	8	280	32
Dawson	R	11	310	21
Olson	R	7	262	7
Alomar	S	13	287	6
O. Smith	S	13	254	1

PITCHER	hand	era
Viola	L	2.67
R. Martinez	R	2.92
D. Martinez	R	2.95
Armstrong	R	3.42
Brantley	R	1.56
Utahle	R	1.74
Myers	L	2.08
L. Smith	R	2.39
Francis	L	2.57
Houston	L	3.05

## AMERICAN ALL-STARS 91

## NATIONAL ALL-STARS 91

PITCHER	hand	speed	avg	hr
R. Henderson	R	18	268	18
Molitor	R	13	325	17
Ripken	R	9	323	34
Fielder	R	5	261	44
Carter	R	14	273	33
Taraboull	R	9	315	31
Palmero	L	8	322	26
Fisk	R	6	241	18
D. Henderson	R	8	276	25
Sierra	S	11	307	25
Griffey Jr	L	11	327	22
Beane	L	7	332	8
Gutierrez	L	12	273	3
Alomar	R	6	217	0

BATTER	hand	speed	avg	hr
Butler	L	15	296	2
Calderon	R	14	300	19
Dawson	R	7	272	31
Johnson	S	14	259	38
Clark	L	9	301	29
Soboo	R	11	301	26
Sandberg	R	12	291	26
Santiago	R	8	267	17
O'Neil	L	8	256	28
Murray	S	8	260	19
Bonilla	S	8	332	18
Gwynn	L	11	317	4
Brugie	R	11	295	4
D. Smith	S	14	285	3

PITCHER	hand	era
Glavine	L	2.54
Morpan	R	2.78
Viola	L	3.97
Browning	L	4.18
L. Smith	R	2.34
J. Martinez	R	2.39
Harris	R	2.70
Smily	L	3.08
Debate	R	3.17
R. Martinez	R	3.27

PITCHER	hand	era
Glavine	L	2.54
Morpan	R	2.78
Viola	L	3.97
Browning	L	4.18
L. Smith	R	2.34
J. Martinez	R	2.39
Harris	R	2.70
Smily	L	3.08
Debate	R	3.17
R. Martinez	R	3.27

## TENGEN 90-DAY LIMITED WARRANTY

TENGEN warrants to the original purchaser of this software product that the medium on which this computer program is recorded is free from defects in material and workmanship for a period of ninety (90) days from date of purchase. TENGEN agrees to either repair or replace at its option, free of charge, any TENGEN software product. **Before any returns are accepted you must call our warranty department (408/473-9400) for a return authorization number.** You may then return the product postage paid, together with the return authorization number, sales slip or similar proof of purchase.

THIS WARRANTY IS NOT APPLICABLE TO NORMAL WEAR AND TEAR. THIS WARRANTY SHALL NOT BE APPLICABLE IF A DEFECT ARISES OUT OF ABUSE, UNREASONABLE USE, MISTREATMENT OR NEGLIGENCE OF THE SOFTWARE PRODUCT. THIS WARRANTY IS IN LIEU OF ALL OTHER WARRANTIES, WHETHER ORAL OR WRITTEN, EXPRESS OR IMPLIED. ANY IMPLIED WARRANTIES OF MERCHANTABILITY AND FITNESS FOR A PARTICULAR PURPOSE ARE HEREBY EXCLUDED. THIS WARRANTY IS LIMITED TO THE 90 DAY PERIOD DESCRIBED ABOVE AND IN NO EVENT SHALL TENGEN BE LIABLE FOR CONSEQUENTIAL OR INCIDENTAL DAMAGES RESULTING FROM THE BREACH OF ANY EXPRESS OR IMPLIED WARRANTIES RELATING TO THE SOFTWARE PRODUCT.

The provisions of this warranty are valid in the United States only. Some states do not allow limitations on how long an implied warranty lasts or exclusion of consequential or incidental damages, so the above limitations and exclusion may not apply to you. This warranty gives you specific legal rights, and you may also have other rights which vary from state to state.

Address all correspondence to:

**TENGEN Inc., Warranty Department, P.O. Box 360782, Milpitas, CA 95036-0782**

**REPAIRS AFTER EXPIRATION OF WARRANTY:** If your game cartridge develops problems after the 90-day warranty period, you may contact Tengen at 1-408-473-9400. If the Tengen customer service technician is unable to solve the problem by phone, they will provide you with RETURN MATERIAL AUTHORIZATION number (RMA). Write this number on the outside of the package used to return your defective game cartridge to Tengen. Return the defective game cartridge, freight prepaid, to Tengen at the address below. Enclose a check or money order for \$12.00, payable to "Tengen." Tengen will, at its option, subject to the conditions above, repair the cartridge or replace it with a new or repaired cartridge. If replacement cartridges are not available, the defective cartridge will be returned and the \$12.00 payment refunded.

Patents: U.S. Nos. 4,442,486; 4,454,594; 4,462,076; Europe No. 80244; Canada No. 1,183,276; Hong Kong No. 88-4302; Singapore No. 88-05; Japan No. 83,399,25; Germany

# AtariGuide



# TENGEN

675 Sycamore Drive • Milpitas, CA 95035

---

Manufactured for play on the Sega™ Genesis™ System.  
Sega and Genesis are trademarks of Sega Enterprises Ltd.  
RBI, TM Alari Games, licensed to Tengen, Inc. © 1993 Tengen, Inc.  
© MLBPA  
Printed in U.S.A.